



TAILOR MADE SPECIAL PROFILES FOR
THE ENGINEERING INDUSTRY

Materials

rolled, drawn, heat treated

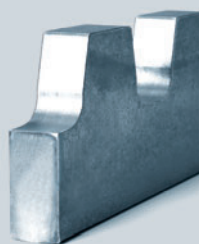
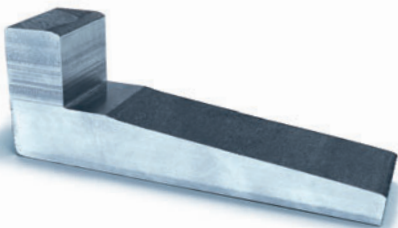
Cold work tool steel			
BÖHLER K100	1.2080	X210Cr12	~ AISI D3
BÖHLER K107	1.2436	X210CrW12	~ AISI D6
BÖHLER K110	1.2379	X153CrMoV12	AISI D2
BÖHLER K245	1.2101	62SiMnCr4	
BÖHLER K455	1.2550	60WCrV8	~ AISI S1
BÖHLER K700	1.3401	X120Mn12	
BÖHLER K720	1.2842	90MnCrV8	~ AISI O2
Hot work tool steel			
BÖHLER W302	1.2344	X40CrMoV5-1	AISI H13
BÖHLER W320	1.2365	32CrMoV12-28	~ AISI H10
Plastic mould steel			
BÖHLER M130	1.2764	X19NiCrMo4	
BÖHLER M238	1.2738	40CrMnNiMo8-6-4	
BÖHLER M303	~ 1.2316	~ X38CrMo16	
Stainless chromium nickel steel			
BÖHLER A200	1.4404	X2CrNiMo17-12-2	AISI 316L
BÖHLER A300	1.4571	X6CrNiMoTi17-12-2	AISI 316Ti
Stainless chromium steel			
BÖHLER N685	1.4112	X90CrMoV18	~ AISI 440B
BÖHLER N695	1.4125	X105CrMo17	AISI 440C
Non-magnetizable austenitic steel			
BÖHLER P501	1.3964	X2CrNiMnMoNNb21-16-5-3	~ AISI XM19
BÖHLER P503	1.3974	X3CrNiMoNbN23-17	~ ASTM F49

Many other materials available!

Applications

 Plant manufacturing
 Ship building
 Railway technology
 etc.

Technical Data

 Max. dimension: 120 mm
 Max. cross section: 4000 mm²

 P: +43 (0)7448 7007 0
 sales@bohler-profil.com

Böhler PROFIL GmbH
 Waidhofner Straße 8
 3333 Böhlerwerk, Austria
 www.boehler-profil.com